

Field-testing with Test Board Performance!

MT-1/NT



Probewell Lab Inc. has made the best even better. The MT-1/NT is the only portable wathour meter tester available today that can test all common residential wathour meter configurations.

The MT-1/NT will save you time and money and help you offer great customer service. Within a few minutes, and in one visit, you can check the accuracy of a meter in front of the customer. Settling high bill complaints has never been easier. Moreover, with the addition of our **new data logging option**, you now have an excellent tool to conduct sampling programs and increase the number of meters tested per day. The MT-1/NT will only help to improve your meter department's efficiency.

Designed for field-testing, the MT-1/NT is highly user-friendly, offers high accuracy and is known as one of the best all over the US and abroad.

The MT-1/NT comes in a practical shockproof carrying case with lots of room for all its accessories.

The MT-1/NT can work with or without sensors. Of course, when used with a sensor, testing becomes automated. You only need to press one key.

For electromechanical meters, Probewell offers the Metercam, a digital camera that detects the disk automatically and tracks revolutions. Totally insensitive to light variations, including direct sunlight, the Metercam requires no alignment and is installed in seconds.



For electronic meters, Probewell's optical pickup uses edge-triggering sensing for reduced sensitivity to varying light conditions. Installed in seconds, it was designed with the weakest pulse outputs in mind and can test meters in any light condition.

- Meter Forms: 1S, 2S, 3S, 4S & 12S(N).
- Class 10, 20, 100, 200 and 320.
- Adjustable internally synthesized and regulated current up to 50 amps.
- Power factor 1 & 0.5.
- Autoranging 120/240 volts, 60 Hz.
- Integrated true Wh standard with accuracy of $\pm 0.025\%$ typical ($\pm 0.01\%$ optional) and $\pm 0.075\%$ conservative worst case ($\pm 0.05\%$ optional). The standard's accuracy is not affected by temperature.
- Accuracy traceable to NIST.
- Meets all ANSI C12 standards.
- Integrated true RMS multimeter to ease readout and operation.
- Operation & storage temp.: -20° to 60° C.
- Deadfront design for safer operation.
- New and improved fuse holders with easy external access.
- Automatic form detection.
- Handheld remote weighs only 0.6 lb and socket adapter only 6 lb.
- Handheld remote has intuitive menus and bilingual display.
- Handheld remote stores up to 100 test results and has a built-in record viewer.
- Data logging option allows the transfer of test results and other data to a PC.
- Data logging option uses USB technology featuring PC auto-launch and more.
- Outstanding disk sensor, the Metercam. Side-mount bracket available for meters with disk masking AMR device.
- Superior optical pickup available for electronic meters.
- Backed by a solid warranty.

ProbeWell

PROBEWELL LAB INC.
4715 des Replats
Quebec, QC, Canada G2J 1B8
Toll Free: 866-626-1126
Tel: 418-626-1126
Fax: 418-626-1424

E-mail: info@probewell.com
<http://www.probewell.com>



NTDataOne - Data Logging Option

The Probewell NTDataOne option is the latest addition to the already versatile MT-1/NT portable wathour meter tester. With this option, your MT-1/NT will now be able to store and transfer all test results as well as answers to your personalized set of questions.



FEATURES

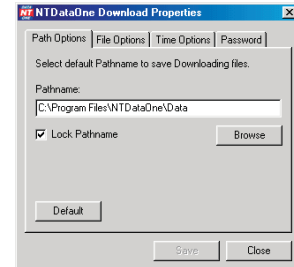
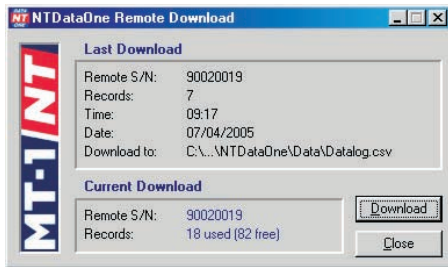
- Stores up to 100 test results -
- Transfers results to PC as a text file (.CSV) -
- Can program up to 8 personal questions -
- USB technology -
- Auto-launch of software on PC -
- Manages files on any data management software - (MS EXCEL, MS ACCESS, more)
- Uploads data to existing databases -
- No training required -

REMOTE DOWNLOAD

Using USB technology, the NTDataOne Remote Download window is automatically started when the MT-1/NT handheld remote is connected to the PC. To minimize training of field personnel, this window is kept separate from the configuration side of the software and download is activated by pressing a single key - DOWNLOAD.

DOWNLOAD PROPERTIES

All NTDataOne PC configurations are programmed in a separate, password-protected, software window. Programmers can preset path names, file names and also determine actions to take in the case of saving to an existing file name: Cancel, Append or Overwrite.

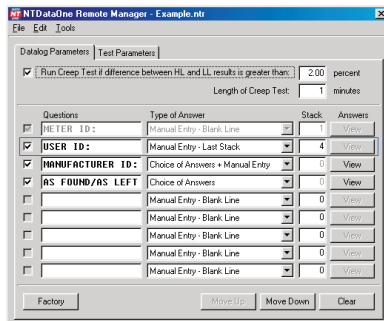


REMOTE MANAGER

The strength of the new NTDataOne option is the possibility it gives the user to enter additional data in the field, directly from the MT-1/NT's new handheld remote. The NTDataOne software allows programmers to configure in seconds up to 8 different questions to be answered in the field by meter technicians. Furthermore, all regular test results can be configured from this window and downloaded to each individual remote, thus saving tremendous time in manual configurations.

DATA MANAGEMENT

The NTDataOne option transfers stored data to a PC as a text file format (.CSV). This format can then be transferred to any data management software. The main advantage of using .CSV files is that column width can be automatically set in seconds. DATA CAN BE VIEWED ON EXCEL ONLY SECONDS AFTER COMING IN FROM THE FIELD. In addition to standard test results and answers to personalized questions, the NTDataOne option automatically transfers such fields as: Standard's serial number, remote serial number, meter forms, Kh, and much more.



TEST#	REC#	DATE/TIME	REMOTE#	SOCKET#	FORM	TA	Kh	MODE	SENSOR	METER ID	%HL	%LL	%WT	%PF	GREENP	USER ID
1	1	06/27/2005 10:06	90020019	90020019	25	30	1	PRESET PULSE	2464201	99.99	100.00	100.00	N/A	ERIC		
2	2	06/27/2005 12:09	90020019	90020019	125	30	1	PRESET PULSE	25470818	99.96	99.98	99.96	N/A	ERIC		
3	3	06/28/2005 09:55	90020019	90020019	25	30	7.2	PRESET CAM	16116924	99.67	99.75	99.69	N/A	ERIC		
4	4	06/28/2005 10:00	90020019	90020019	25	30	7.2	PRESET CAM	7574399	99.60	98.67	99.29	N/A	ERIC		
5	5	06/28/2005 09:50	90020019	90020019	25	30	7.2	PRESET CAM	7574399	99.65	98.51	99.34	N/A	ERIC		
6	6	06/28/2005 10:34	90020019	90020019	45	2.5	1	USER PULSE	36173960				99.96	N/A	PAUL	
7	7	06/28/2005 14:45	90020019	90020019	25	30	7.2	PRESET CAM	16116924	99.62	99.60	99.63	N/A	PAUL		

WETHER IN SAMPLING PROGRAMS OR HIGH BILL COMPLAINTS, TIME SAVED IN DATA ENTRY AND ERROR MANAGEMENT WILL ONLY HELP TO IMPROVE YOUR METER DEPARTMENT'S EFFICIENCY.